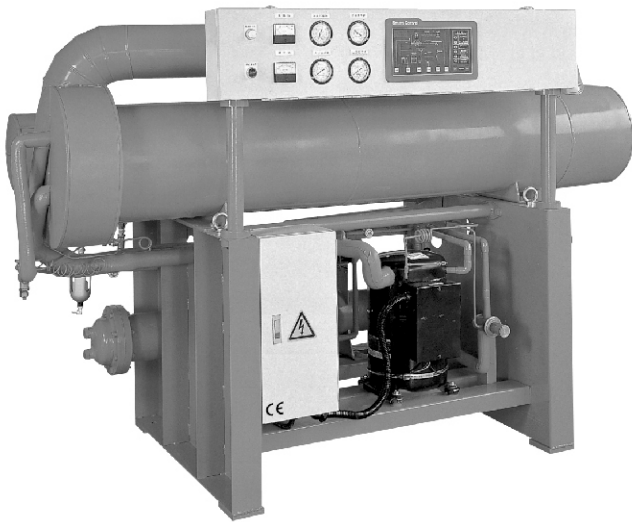


# M2K series 300~1000

## REFRIGERATION COMPRESSED AIR DRYER



### Features:

- Stainless steel air pipes, no corrosion & block (optional)
- Compact, state-of-the-art, well ventilated design
- Capacity 20%~50% larger than normal dryers
- Higher inlet & environment temperature resistance
- 2~10°C P.D.P. meets ISO 8573.1 requirements
- 0.2 kgf/cm<sup>2</sup> pressure drop helps energy saving
- Stainless steel mesh separator & Manual-Auto drain system
- CE pressure vessel manufacture identified
- Custom design: Stainless steel add P to model no.  
Air cooled add A to model no.  
high pressure add H to model no.

### Specification:

| Type                                | N type Normal Inlet Temp. (water cooled)  |          |          |          |          |          |          |          |           | G type High Inlet Temp. (water cooled)  |          |          |          |          |          |          |          |           |
|-------------------------------------|---|----------|----------|----------|----------|----------|----------|----------|-----------|---|----------|----------|----------|----------|----------|----------|----------|-----------|
| Model                               | M2K 300N  | M2K 350N | M2K 400N | M2K 500N | M2K 600N | M2K 700N | M2K 800N | M2K 900N | M2K 1000N | M2K 300G  | M2K 350G | M2K 400G | M2K 500G | M2K 600G | M2K 700G | M2K 800G | M2K 900G | M2K 1000G |
| Max. capacity(Nm <sup>3</sup> /min) | 43  | 50       | 61       | 72       | 79       | 93       | 116      | 125      | 134       | 43  | 50       | 61       | 72       | 79       | 93       | 116      | 125      | 134       |
| Connection(inch)                    | 4"FL  | 4"FL     | 4"FL     | 5"FL     | 5"FL     | 6"FL     | 6"FL     | 6"FL     | 6"FL      | 4"FL  | 4"FL     | 4"FL     | 5"FL     | 5"FL     | 6"FL     | 6"FL     | 6"FL     | 6"FL      |
| Power supply(50/60Hz)               | 3Ph/380V(220V.440V custom-made)   |          |          |          |          |          |          |          |           | 3Ph/380V(220V.440V custom-made)   |          |          |          |          |          |          |          |           |
| Input power (kw)                    | 9.8   | 9.8      | 11.5     | 13.2     | 16.5     | 16.5     | 20.2     | 20.2     | 24        | 9.8   | 9.8      | 11.5     | 13.2     | 16.5     | 16.5     | 20.2     | 20.2     | 24        |
| Operating current(A)                | 14.5  | 14.5     | 20       | 25.4     | 27       | 27       | 31       | 31       | 36        | 14.5  | 14.5     | 20       | 25.4     | 27       | 27       | 31       | 31       | 36        |
| Full-load current(A)                | 20  | 20       | 30       | 38       | 40       | 40       | 47       | 47       | 55        | 20  | 20       | 30       | 38       | 40       | 40       | 47       | 47       | 55        |
| Refrigerant                         | R-22(R404a,R407c,R134a custom-made )  |          |          |          |          |          |          |          |           | R-22(R404a,R407c,R134a custom-made )  |          |          |          |          |          |          |          |           |
| Condenser (RT)                      | 5   | 5        | 7.5      | 10       | 10       | 12.5     | 15       | 15       | 20        | 5   | 5        | 7.5      | 10       | 10       | 12.5     | 15       | 15       | 20        |
| Net weight(kg)                      | 550   | 580      | 650      | 800      | 900      | 1000     | 1200     | 1450     | 1700      | 650   | 650      | 730      | 880      | 1000     | 1100     | 1350     | 1600     | 1850      |
| Dimension L (mm)                    | H   |          |          | 1530     |          |          | 1630     |          |           | H   |          |          | 1530     |          |          | 1630     |          |           |
| Dimension W (mm)                    | 2180  |          |          | 2180     |          |          | 2560     |          |           | 2180  |          |          | 2180     |          |          | 2560     |          |           |
| Conditions (Air-cooled)             | Inlet temperature: 5~50°C<br>Environment temperature: 2~42°C<br>Working pressure: 7~10 kgf/cm <sup>2</sup><br>Cooling water temperature: 15~40°C<br>Cooling water pressure: 2~4 kgf/cm <sup>2</sup><br>Cooling water: $\ell/hr=157 \times \text{air consumption}(Nm^3/min)$ |          |          |          |          |          |          |          |           | Inlet temperature: 5~80°C<br>Environment temperature: 2~42°C<br>Working pressure: 7~10 kgf/cm <sup>2</sup><br>Cooling water temperature: 15~40°C<br>Cooling water pressure: 2~4 kgf/cm <sup>2</sup><br>Cooling water: $\ell/hr=450 \times \text{air consumption}(Nm^3/min)$ |          |          |          |          |          |          |          |           |

### Application:

